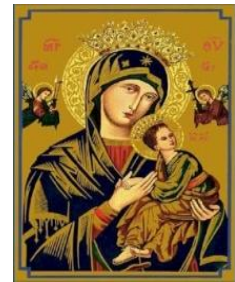




Our Lady of Perpetual Help Catholic School
531 Williams Blvd.
Kenner, LA 70062
Phone: 504-464-0531
Fax: 504-464-0725
Brother Augustine Kozdroj, F.S.E. Principal
bak@olphla.org



Dear <Parent>:

FACTS Grant & Aid Assessment will be conducting the financial need analysis for <School Name> for the upcoming 2012-2013 school year. Families applying for financial aid will need to complete an application and submit the necessary supporting documentation to FACTS Grant & Aid Assessment by April 15, 2012.. Applicants can apply online beginning March 5, 2012 at www.factstuitionaid.com. The following information is required in order for FACTS to process your application:

1. Submit a completed online application. **Faxed or copied applications will not be accepted.** Please do not submit multiple applications. FACTS will process one application per household.
2. Payment of the \$25 nonrefundable application fee.
 - Copies of your 2011 IRS Federal Form 1040, 1040A or 1040-EZ U.S. Individual Income Tax Return (2 pages), including all supporting tax Schedules C or C-EZ, Schedule E, Schedule F, Depreciation Form 4562, S Corporation Form 1120S (4 pages) & Schedule K-1 and Form 8825, Partnership Form 1065 (5 pages) & Schedule K-1 and Form 8825, Estates and Trusts Form 1041 & Schedule K-1. If applicant and co-applicant file separately, we require both tax returns for the same tax year. **We do NOT accept State tax returns. Any DRAFT or PRE-VIEW copies of the Tax Return will NOT be accepted.** If you submit an Amended Form 1040X Tax Return we will need the original Tax Return that was submitted to the IRS.
3. Copies of all 2011 W-2 Wage and Tax Statements for both you and your spouse. NOTE: If you are applying before you have received all 2011 W-2 Wage and Tax Statements, please submit them as soon as they become available.
4. Copies of all supporting documentation for household Social Security Income, Welfare, Child Support, Food Stamps, Workers' Compensation, and Temporary Assistance for Needy Families (TANF). Supporting documentation must be provided even if you do not file a Tax Return.

If you have provided an e-mail address make sure to check the primary e-mail address regularly for Notices sent by FACTS indicating missing information or tax documents. Application deadlines are set by the school or institution awarding the scholarships. If you are applying after a given deadline date, please contact your school or institution to ensure that your application will be accepted.

NOTE: Award decisions are not made by FACTS, but by the organization providing the scholarship.

If you have questions or concerns about the application process, you may speak with a FACTS Customer Care Representative at 1-866-315-9262. Fax supporting documents to 866-315-9264.